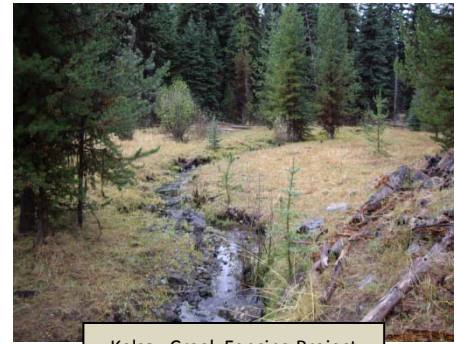
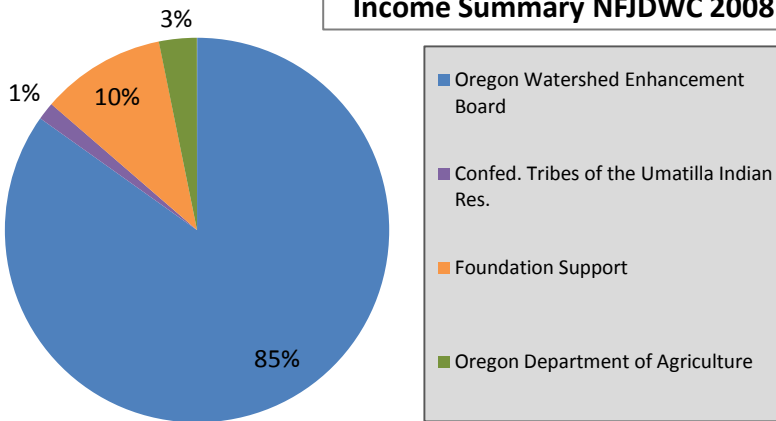


North Fork John Day Watershed Council Detail Report 2008

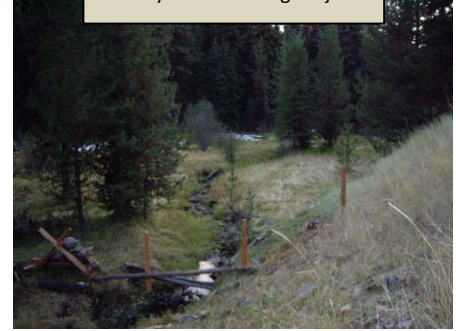
Organizational Highlights:

In 2008, two years after separating from Monument SWCD and becoming a nonprofit corporation, the Watershed Council decided to hire a new Coordinator to help advance the organization and expand its project portfolio. The new coordinator submitted several proposals for high priority projects. Staff also developed a Cooperative Weed Management Area, carried out weed treatments within the watershed and initiated the monitoring program for the Upper Middle Fork Intensively Monitored Watershed.

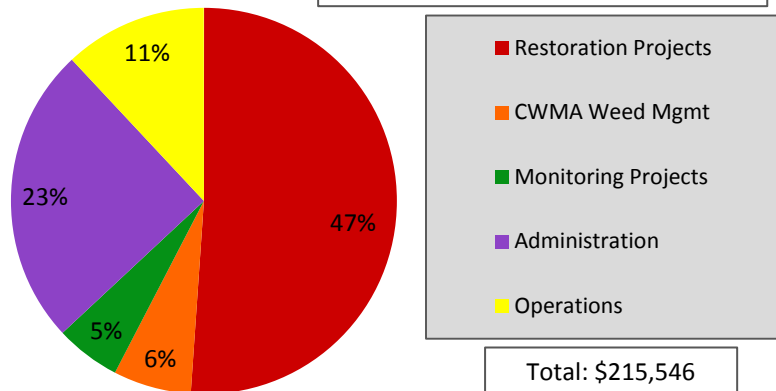
Income Summary NFJDWC 2008



Kelsay Creek Fencing Project



Expense Summary NFJDWC 2008



2008 Staff:

- Coordinator: Amy Charette
- Weed Project Manager: Amanda Born
- Contractors:
 - Fiscal Administration
 - Web Design & Maint.

Projects funded in 2008:

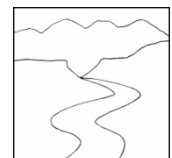
1. OWEB - Kelsay Creek Fencing Project
2. OWEB - West Fork Meadowbrook Riparian Improvement
3. OWEB - Neal Push-Up Dam Removal
4. OWEB - Middle Fork IMW
5. Ecotrust - Desolation Creek Culvert Replacements
6. ODA - Pass/Long Creek Whitetop

Project Highlight: North Fork Cooperative Weed Management Area

The North Fork John Day Watershed Council formed the North Fork Cooperative Weed Management Area (CWMA) to bring together those responsible for noxious weed management within the watershed to develop common management objectives, set realistic management priorities, facilitate effective treatment, and coordinate weed control efforts. In 2008, the North Fork CWMA helped treat almost 2,000 acres of noxious weeds, including Mediterranean sage, yellow starthistle, scotch thistle, water hemlock, diffuse knapweed, whitetop, plumeless thistle, squarrose knapweed, and medusahead rye. Biological control agents were also collected and distributed for yellow starthistle, toadflax, leafy spurge, knapweed, and Mediterranean sage.



Whitetop infestation near Long Creek



North Fork John Day Watershed Council



Contact: Amy Charette, Coordinator
PO Box 444 Long Creek, OR 97856
(541)421-3018 amy@nfjdw.org